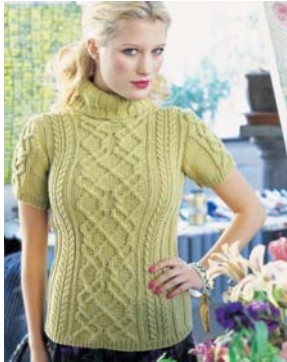


### 3. short sleeve pullover



Shown in Knit 1 Spring/Summer 2009 on page 28.  
Instructions start on page 55.

chart 2

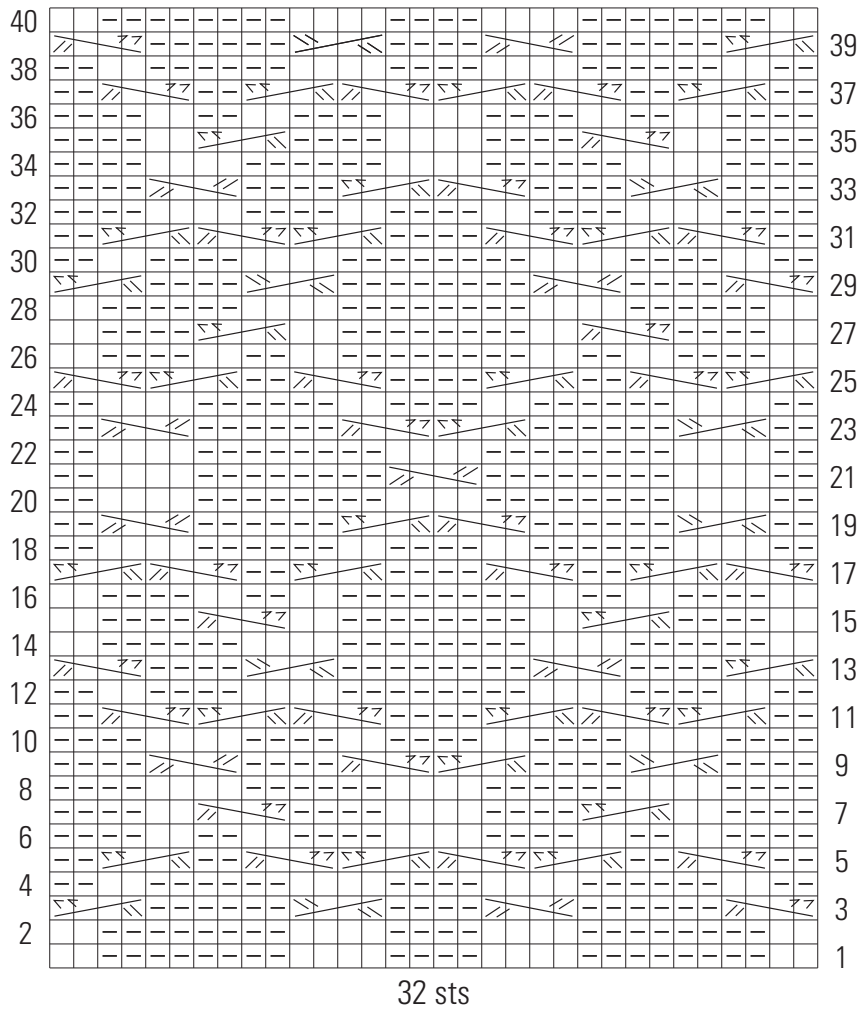
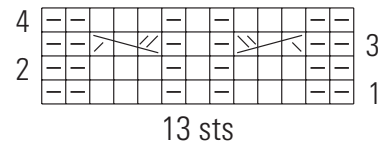


chart 1



stitch key

- k on rs, p on ws
- p on rs, k on ws
- 3-st RC
- 3-st LC
- 4-st RPC
- 4-st LPC
- 4-st RC
- 4-st LC