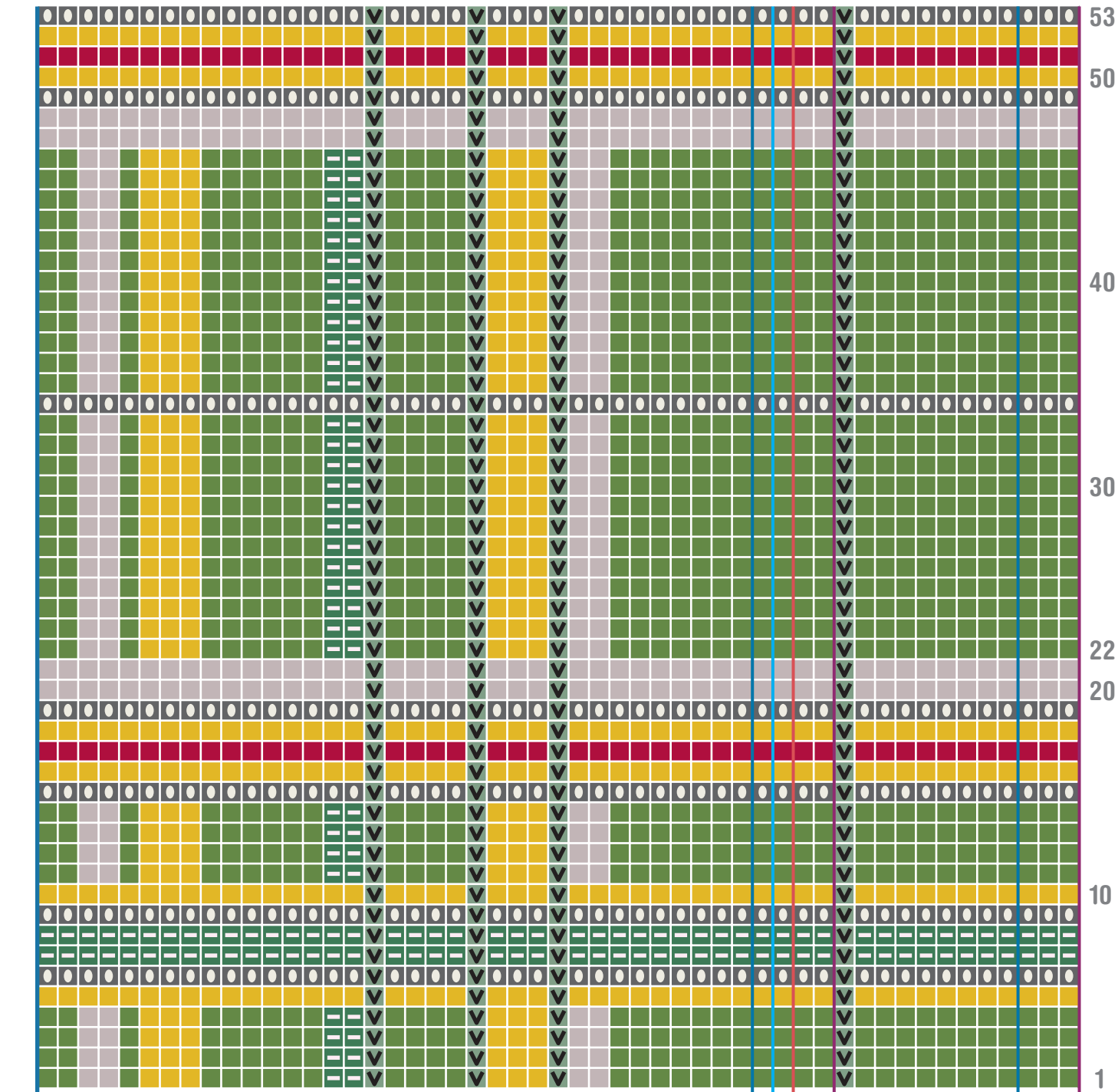


left half (left back, right front, left sleeve)



end all

color key

- grey
- black
- loden
- gold
- cranberry
- avocado
- ch sl st w/black

beg S/M left sleeve

beg S/M left back

beg L left sleeve

beg L left back

beg S/M right front

beg L right front

Knit.1 Spring 2007 No. 34c2 Plaid Jacket
 When working all pieces, begin and end each piece as indicated on the chart.