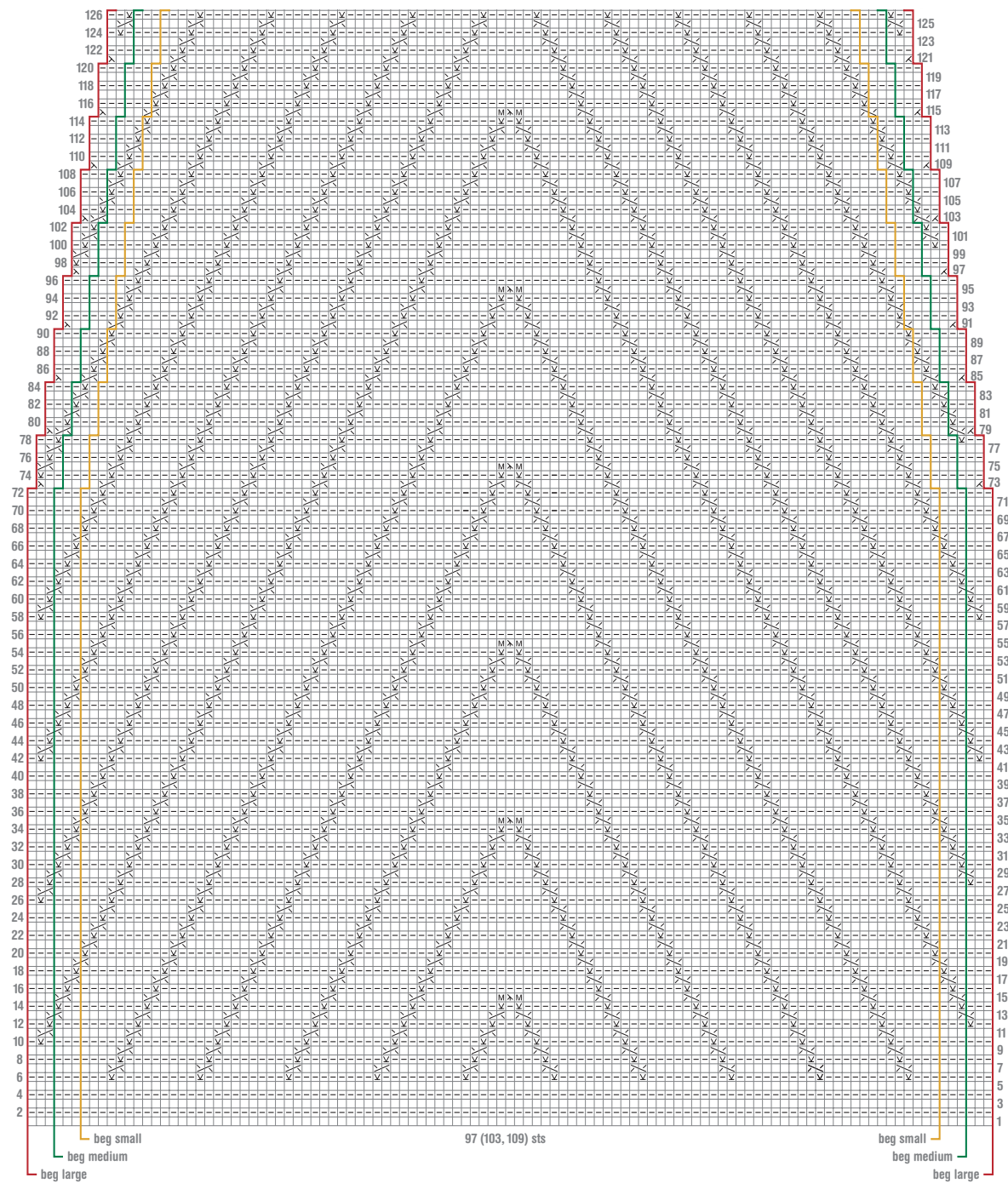




Instructions on page 91. Sized for Small, Medium, Large. Shown in size Small on pages 58 & 59.



stitch key

- k on rs, p on ws
- ▤ p on rs, k on ws
- ⊠ sk2p
- ⊞ rt
- ⊞ lt
- ⊞ sl st purwise wyif
- ⊞ m1
- ⊞ k2tog
- ⊞ ssk
- ⊞ bind off

